

# Hydrating Velvet Blur

## 2812-2.08



+

Blur effect

+

Matte mousse texture

+

Moisturizing

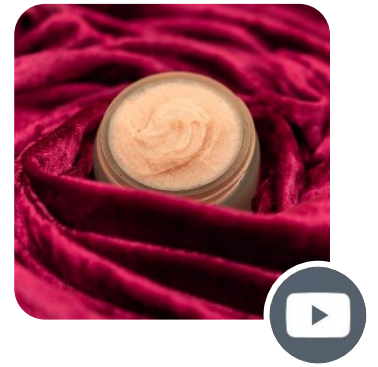
Phase	Name	INCI	Supplier	%
A1	DEMINERALIZED WATER	WATER	–	38.07
	BEAUTE BY ROQUETTE® ST 118	SODIUM CARBOXYMETHYL STARCH	ROQUETTE	2.50
A2	GLYCERIN	GLYCERIN	–	29.50
	SOLAGUM™ GM	GLUCOMANNAN	SEPPIC	0.25
B	<b>EMULIUM® DOLCEA MB</b>	CETEARYL ALCOHOL, GLYCERYL STEARATE, JOJOBA ESTERS, HELIANTHUS ANNUUS (SUNFLOWER) SEED WAX, SODIUM STEAROYL GLUTAMATE, WATER, POLYGLYCERIN-3	GATTEFOSSÉ	6.50
	KAHLWAX 2442L	CARNAUBA (CORPENICIA CERIFERA) WAX	KAHL	1.00
	<b>ACTICIRE® MB</b>	JOJOBA ESTERS, HELIANTHUS ANNUUS (SUNFLOWER) SEED WAX, POLYGLYCERIN-3, ACACIA DECURRENS FLOWER WAX	GATTEFOSSÉ	2.00
	<b>LABRAFAC™ CC MB</b>	CAPRYLIC/CAPRIC TRIGLYCERIDE	GATTEFOSSÉ	5.00
	COSPHADERM® DICAPO NATURAL	CAPRYLYL GLYCOL, PROPANEDIOL, GLYCERYL PALMITATE	COSPHATEC	1.00
	<b>GELEOL™ MB</b>	GLYCERYL STEARATE	GATTEFOSSÉ	2.50
	<b>MOD MB</b>	OCTYLDODECYL MYRISTATE	GATTEFOSSÉ	5.00
C	AMIHOPE® LL	LAUROYL LYSINE	AJINOMOTO	2.00
	UNICERT® YELLOW 08005-J (0.1% SOL.)	WATER, YELLOW 5	SENSIENT	2.08
	UNICERT® RED 07004 J (0.1% SOL.)	WATER, RED 4	SENSIENT	1.40
	<b>GATULINE® RENEW</b>	BUTYLENE GLYCOL, WATER, CRYPTOMERIA JAPONICA BUD EXTRACT	GATTEFOSSÉ	1.00
	PERFUME VELOURS 1 ITM0726026	PARFUM	ARGEVILLE	0.20
				100.00

## Operating instructions

- Heat water phase A1 to 80°C and disperse Beauté by Roquette® ST 118 under high shear.
- Prepare premix phase A2 and add into water phase A1. Disperse under high shear until the gel is formed. Check homogeneity.
- Weigh oil phase B and heat at 85°C.
- Proceed with the emulsion of oil phase B into water phase A at 80°C under medium shear and then increase to high shear for 10-15 minutes.
- Cool down under moderate mixing until reaching 35°C. Add ingredients of phase C one by one under medium shear (to disperse the powder and colorants).
- Continue to cool down under moderate mixing.
- Check pH and adjust if necessary.

## Hydrating Velvet Blur

2812-2.08



### Description

Discover a velvety cream, immediately erasing skin pores upon application thanks to its mousse texture.

The combination of **Emulium® Dolcea MB**, **Acticire® MB**, and **Gatuline® Renew** gives a high moisturizing power to the formula.

### Specifications

- + Aspect: Peach mousse cream
- + Viscosity Brookfield RV (spindle C, speed 5): approx. 170 000 mPa.s after 24h
- + >99.5% natural origin (ISO 16128)
- + pH: 6.7 ± 0.3

### Ingredients

- **Emulium® Dolcea MB** is a robust O/W sensorial emulsifier, characterized by its extreme softness recognizable in any formulation.
- **Acticire® MB** is an active texturizing agent that brings comfort and moisturizing properties.
- **Geleol™ MB** and Kahlwax 2442L thicken the emulsion and contributes to the good stability.
- Cosphaderm® Dicapo Natural is a full-spectrum antimicrobial protection over abroad pH range (3.5 - 7.5).
- The synergy of Beauté by Roquette® ST 118, Solagum™ GM and Amihope® LL creates the fluffy/foamy texture.
- The high percentage of glycerin is needed for gliding and Beauté by Roquette® ST 118 wetting.
- **MOD MB** provides a rich feel and brings comfort.
- **Labrafac™ CC MB** is a stable and inert emollient providing spreadability.
- **Gatuline® Renew** is an active ingredient extracted from Japanese cedar. It kick-starts the cell renewal process and strengthens the barrier function.